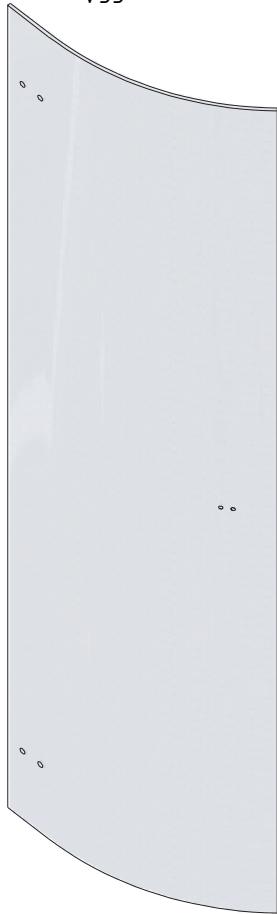


2. 2x  
V52



3. 2x  
V55



4. 2x



6. 2x  
P2294

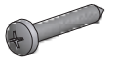


7. 8x  
M0511



Ø6

8. 8x  
M0811



3,9x38

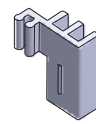
9. 8x  
M5974



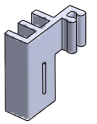
10. 8x  
M5975



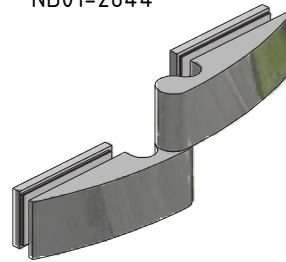
11. 4x  
M5924



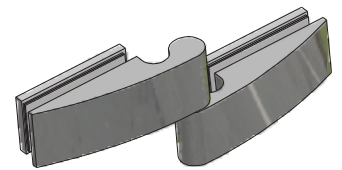
12. 4x  
M5925



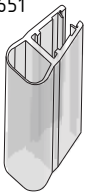
13. 2x  
ND01-2844



23. 2x  
ND01-2843



15. 2x  
M2651



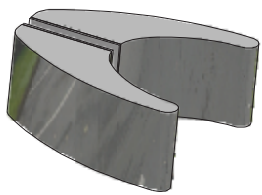
16. 1x  
M4175



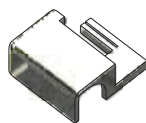
17. 1x  
M4174



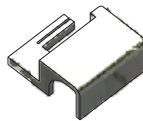
14. 2x



18. 1x  
M6596



19. 1x  
M6595



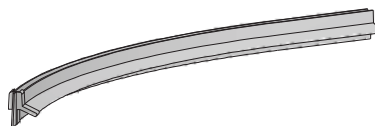
20. 1x  
P81



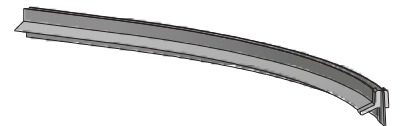
21. 2x  
M6473



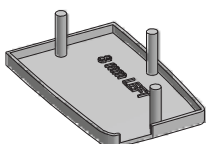
22. 1x



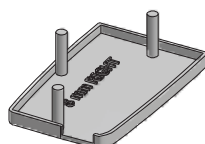
25. 1x



26. 1x  
M6646



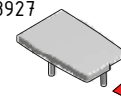
29. 1x  
M6645



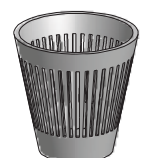
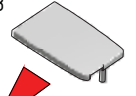
30. 2x  
M1916

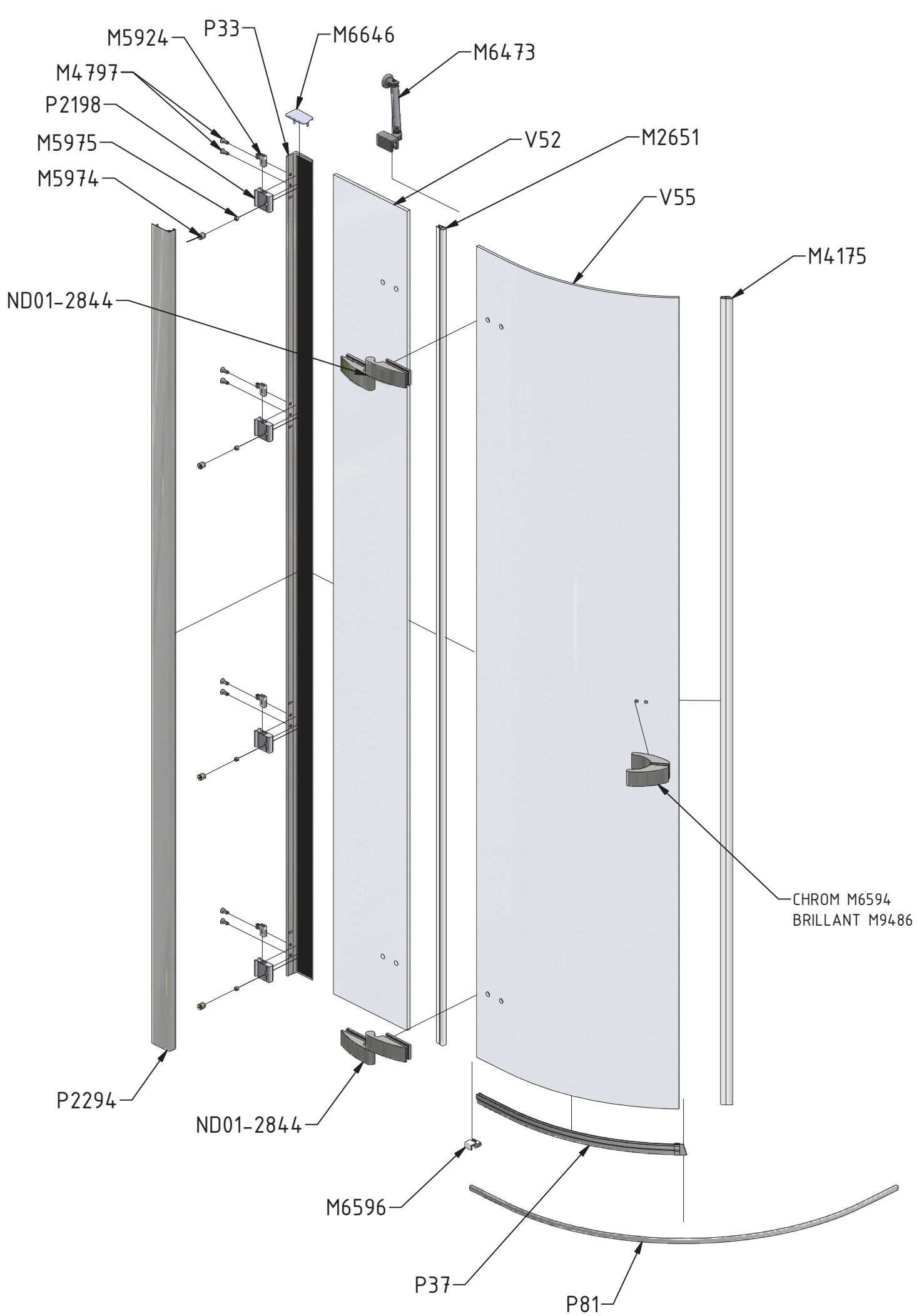


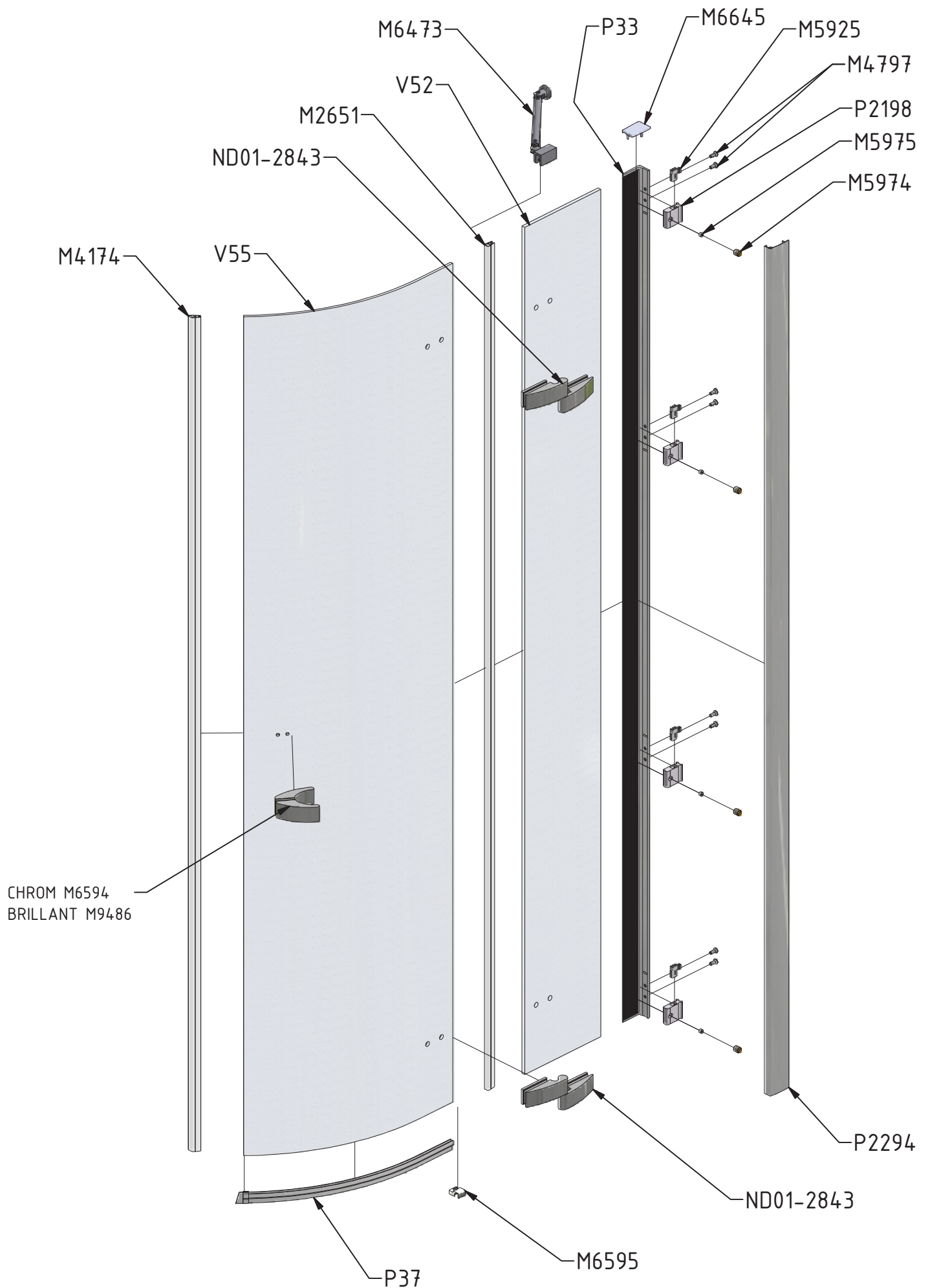
34. 1x  
M8927



35. 1x  
M8928







|     |      |  |              |
|-----|------|--|--------------|
| P33 |      |  | ND01-0973-00 |
| P37 |      |  | ND01-2421    |
| P81 | 800  |  | P2663        |
|     | 900  |  | P2289        |
|     | 1000 |  | P2289        |

|     |          |             |                 |
|-----|----------|-------------|-----------------|
| V52 | 800      | clear glass | ND03-0403-00-02 |
|     |          |             |                 |
|     | 900      | clear glass | ND03-0278-00-02 |
| V55 | 800      | clear glass | ND02-0548-00-02 |
|     |          |             |                 |
| V55 | 900;1000 | clear glass | ND02-0333-00-02 |
|     |          |             |                 |